



YOUR DEFINITIVE GUIDE TO STYLISH GARDENS

FREE SEEDS
RADICCHIO
CHICORY

GARDENS

ILLUSTRATED

SEPTEMBER 2010 £3.95

Be inspired

by gorgeous planting ideas
for your late summer garden

6 STUNNING
GARDENS
*From a seaside
hideaway to an
idyllic château*



IF YOUR FREE SEEDS ARE
MISSING PLEASE CONTACT
YOUR NEWSAGENT

YOUR IN-DEPTH PLANTING PLAN
for a breathtaking border



Media

TELEVISION

• *Gardeners' World*
Seasonal gardening highlights from Toby Buckland and team out and about enjoying late summer colour, plus jobs for the month from the garden at Greenacre. Fridays, 8pm, BBC2.

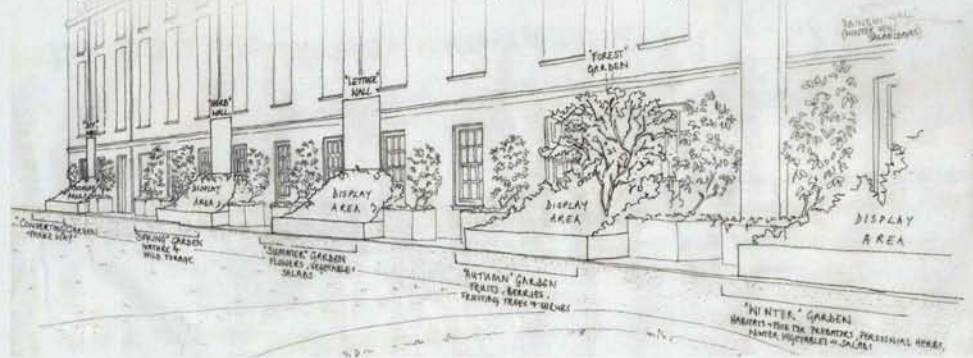
RADIO

• *Gardeners' Question Time*
Topical tips and advice from the expert panel. There are visits to Helmingham Hall (for ideas on late-summer colour) and Kew (to assess how plants are stressed during periods of drought). Plus updates on the programme's featured Listener Gardens. Fridays at 3pm, BBC Radio 4 (repeated Sundays at 2pm).

• *Saving Species*
Conservationist and broadcaster Brett Westwood continues his series exploring natural history, biodiversity and conservation. He reports live from home and afar, including this month a feature on swifts as they prepare to fly south. Tuesdays, 11am, BBC Radio 4. See also www.bbc.co.uk/savingspecies

Green event at Prince's garden

The Prince of Wales has put his name to a new event hosted in the rarely seen gardens at his official London residence, Clarence House. The *Garden Party to Make a Difference* celebrates sustainable living, with grow-your-own as a key theme. Renowned organic farmer and writer Tom Petherick and design team Lulu Urquhart and Alan Hunt have created a *Future Cities Garden* exhibit (pictured) to offer achievable yet appealing ideas. The garden party also includes talks from experts as well as music and comedy. 8-19 September. Details and ticket booking at www.startuk.org or call 0844 248 5052.



Unlikely gardens

Gardens don't need to be grand affairs. A pot of annual flowers in an otherwise barren, concrete corner can make all the difference, and positively benefits both individuals and communities. These qualities are something that writer Elspeth Thompson was hugely supportive of, and recognised in the online diary she started just before she died earlier this year. Now the Gardening Against the Odds awards have been launched by *The Sunday Telegraph* in Elspeth's name to celebrate ordinary gardeners who nurture a green corner in an unpromising or unexpected place. The closing date for entries is 17 September. See www.telegraph.co.uk/gardeningawards for details.

Take part in the Big Bulb Plant now and you'll help brighten your community next spring. The project's website explains how to join in and what to plant. You can also help break the world record for a mass planting of bulbs, on 2 October.

www.thebigbulbplant.com



ROALD DAHL GARDEN OPENS

Fans of the late, great children's writer Roald Dahl will be delighted to hear that the garden at his former home in Buckinghamshire, Gipsy House, is open to visitors this month as part of the annual Roald Dahl Day celebrations. 12 September, 11am-5pm. Entry free. • For details call 01494 890465 or see www.roalddahlfoundation.org