

design news



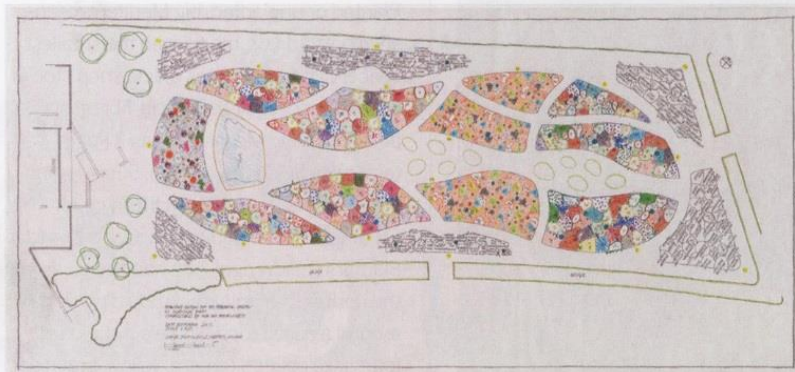
HEREFORDSHIRE ART WEEK

Open garden and pottery

Ceramicist Mark de la Torre is opening his pottery and garden for Herefordshire Art Week, 6-14 September, where a selection of his richly textured hanging pots are for sale, from £110. Slab-built in stoneware clay, the pots can be hung flush to the wall as sculptural objects or planted up with small, clump-forming plants that like dry conditions, such as sempervivums and alpines. The Courtyard, Old Rectory, Stoke Lacy, Herefordshire HR7 4HH. 11am-5pm. Tel 01432 820500.

PIET OUDOLF EXHIBITION

Lovers of Piet Oudolf's planting designs are in for a treat at the new Hauser & Wirth Gallery in Somerset. Not only can you wander through the maestro's most recent UK garden, but you can also see his drawings for his projects, including *The High Line* in New York and London's *Serpentine Gallery*, in the accompanying exhibition until 5 October. The garden spills out across the fields behind the gallery, and is a swirling tapestry of some 26,000 herbaceous perennials planted in a series of curving beds. Opens 14 September, hauserwirth.com



GARDEN MUSEUM

Gardens and War

The next exhibition at London's Garden Museum explores how planting and garden-making introduced beauty and normality in the most extreme places: in particular at the Front during WW1 and in the trenches. Displays include Will's Cigarette cards collected by soldiers and a medal awarded for the best vegetables grown on the Western Front. Book now for a tour of the exhibition led by curator Russell Clark. Opens 24 September. gardenmuseum.org.uk



Notebook

- **V&A is hosting a study day** with historians Gavin Stamp and Justine Hopkins that considers the careers and collaborations of Edwin Lutyens and Gertrude Jekyll. Saturday 6 September (11am-4.30pm). Book at www.vam.ac.uk/whatson
- **GARDENS ILLUSTRATED**

editor Juliet Roberts is chairing a discussion with Luciano Giubbilei and Fergus Garrett on gardens, planting and design styles at the Maestri del Paesaggio – International Meeting of the Landscape and Garden in Bergamo, Italy on 21 September. en.arketipos.org

- **Learn which trees and shrubs are best for wildlife** at the one-day autumn workshop at the RSPB wildlife garden at Flatford, Suffolk, on 21 September (10am-4pm). To book a place call 01206 391153. rspb.org.uk
- **The restored Wall Walk at Bolsover Castle**, Derbyshire.

offers views into the Fountain Garden, which has been replanted with over 5,000 plants. The 17th-century garden room has also been restored. Open every day 10am-6pm, 10am-5pm in October, and weekends only 10am-4pm from 3 November. english-heritage.org.uk

PLANTING DESIGN FOR THE PERENNIAL GARDEN AT DURSLEY FARM, SEPTEMBER 2012. COLOURED PEN, PENCIL AND PEN ON TRACING PAPER. 74 x 163.5 CM / 29 1/8 x 64 3/8 IN. © PIET OUDOLF. COURTESY PIET OUDOLF AND HAUSER & WIRTH. PHOTO: ALEX DELFANNE