

THE BEST IN INTERNATIONAL DESIGN AND DECORATION

HOUSE & GARDEN[®]

August
2014
£3.99



SUMMER PARTIES

Wine and food for seasonal celebrations
Design ideas for outdoor entertaining

PLUS
Long mirrors
Simple furniture
Bespoke lampshades

OLD BUILDINGS, NEW INTERIORS

A Cotswold rectory revived

Turning a Martello tower into a modern home

The country house that rose from the ashes

Outside interests

Clare Foster finds fresh gardening inspiration



The **National Gardens Scheme** continues to raise thousands of pounds for charity each year, with an impressive 600 new gardens added to *The Yellow Book* in 2014. New gardens include Richmond House (above) in Clare, Suffolk, home of writer and gardener Catherine Horwood. The romantic walled garden is filled with scented plants and has a newly planted perennial parterre as well as a kitchen and cutting garden, informal wooded area and over 50 varieties of rose. Richmond House opens on July 27, 2-5pm. *The Yellow Book 2014* costs £9.99 and is available at www.ngs.org.uk.

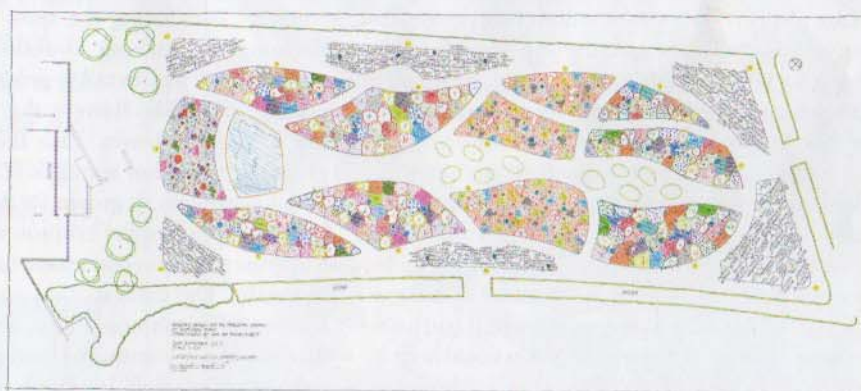


SWEET SEATS

These **CHAIRS** from Oliver Bonas are perfect for a small garden. Made from iron, the mint green and peony pink 'Primrose' chairs have a French-style design, while the yellow 'Canary' chair has a whimsical bird on its birdcage-like back. Each chair measures 86 x 36.5 x 39cm and costs £59 plus delivery, from www.oliverbonas.com.

This window-sill **propagator pot** is made from recycled yogurt cartons and comes with compost discs and basil seeds. The seeds are sown into the narrow end of the pot and covered with the clear lid. Once the seedling is big enough to prick out, the pot can be inverted and the seedling replanted to grow on, with the lid now a watering jug. Measuring 21.5cm high and 15.7cm in diameter, the 'Eco Propagator', costs

£13.90, plus p&p, from www.henandhammock.co.uk.



Landscape architect *Piet Oudolf* is designing a garden for the new *Hauser & Wirth* contemporary art gallery, opening in September in Bruton, Somerset (see 'News'). As well as a cloister courtyard, there is a meadow planted with perennials and grasses. In typical Oudolf style, the meadow will be bursting with colour and texture, itself a work of art to attract visitors. www.hauserwirthsomerset.com ▷



ARTISTIC DEVELOPMENT

Hauser & Wirth has long been a major player in the commercial art world – representing the likes of Martin Creed, Ron Mueck, Christopher Orr and Phyllida Barlow, with galleries in London, Zurich, New York and now Somerset. The latest addition to the Hauser & Wirth stable is located at Durslade Farm in Bruton. This is a multi-purpose arts centre with community and landscape at the heart of the project. Existing buildings have been renovated and two new galleries built; there is an active artists' residency programme, a restaurant offering locally sourced produce, a library, a bookshop and a landscaped meadow designed by Piet Oudolf (see 'Outside interests'). Hauser & Wirth Somerset is open, with free admission to the public, six days a week, throughout the year. www.hauserwirthsomerset.com



TRUE VALUE

Former Sotheby's director Patrick van der Vorst launched the online valuation service Value My Stuff in 2009. The company has now expanded its repertoire to include an online auction platform, Auction My Stuff. Here Value My Stuff customers can put items up for auction – from a sofa to a starfish ring (pictured) – in a marketplace where all items are vetted by experts, many of whom are ex Sotheby's, Christie's or Bonhams. Market value is dictated by not only demand but also actual worth. Auction My Stuff will take a 10 per cent seller's commission. www.auctionmystuff.com



Animal magic

Children of the Eighties and early Nineties are likely to remember the residents of **Brambly Hedge**, a community of self-sufficient mice created by author Jill Barklem. This cast of characters has been given a new lease of life by children's furniture specialists Dragons of Walton Street. Owner Lucinda Croft has collaborated with Jill's children, Lizzie and Peter, to create a new range of furniture. 'Jill's work is so amazingly detailed and vivid. I'm not sure how she did it, but each page is a real masterpiece,' says Lucinda. 'Of course, this makes it both a daunting and exciting challenge for us to recreate the magic on our hand-painted pieces, but our amazing artists have risen to the challenge. In fact, we have fallen in love with the characters all over again.' www.dragonsofwaltonstreet.com ▷

WEBWATCH:

Bespoke lampshades

Having spent money on a lamp, there's something deeply disappointing about not being able to find a decent shade to match it. Here are three websites that help you to design your own – cutting out the middleman and allowing you to create something bespoke. London-based lighting brand www.copperandsilk.com gives you the option of multiple shapes, sizes, fabrics, linings and fittings (pictured below). It is possible to make more than 70,600 completely different lampshades from the choices available. www.sarahbowenlighting.co.uk has slightly fewer options, but provides a straightforward, five-step process to building your own lampshade. At www.margoselby.com, lampshades can be made from any Margo Selby fabric or wallpaper in any size to suit your requirements.

